



91 Watermeadow Drive

Watermeadow, Northamptonshire

oriordanbond
SALES & LETTINGS



91 Watermeadow Drive

Watermeadow

NN3 8ST

PRICE £285,000

A modern four bedroom detached property situated in the popular Watermeadow area. The property is situated on a good size plot and is located near to Woodvale Primary School as well as many further local schools.

The accommodation comprises entrance hall, cloakroom/WC, sitting room, dining room, fitted kitchen, conservatory, four first floor bedrooms and a family bathroom. Outside are gardens to the front and rear and a double width driveway providing off road parking leading to a double garage. Further benefits include uPVC double glazing, gas radiator heating. (C/1125/M)

Additional information

- Council Tax Band: D
- Energy Efficiency Rating: D

Viewing

Viewing strictly by appointment – details below

Disclaimer

O'Riordan Bond Estate Agents Limited has not tested apparatus, equipment, fittings or services and so cannot verify they are in working order. The buyer is advised to obtain verification from their solicitor or surveyor.

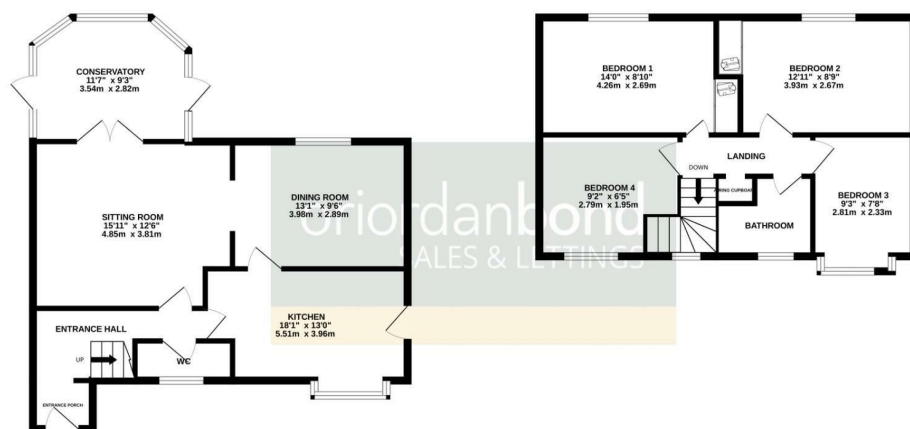
O'Riordan Bond Weston Favell Sales

01604 784007

westonfavell@oriordanbond.co.uk

GROUND FLOOR

1ST FLOOR



TOTAL FLOOR AREA: 1125 sq.ft. (104.5 sq.m.) approx.

Whilst every attempt has been made to ensure the accuracy of the floorplan contained here, measurements of doors, windows, rooms and any other items are approximate and no responsibility is taken for any error, omission or mis-statement. This plan is for illustrative purposes only and should be used as such by any prospective purchaser. The services, systems and appliances shown have not been tested and no guarantee as to their operability or efficiency can be given.

Made with Metreplan C1024